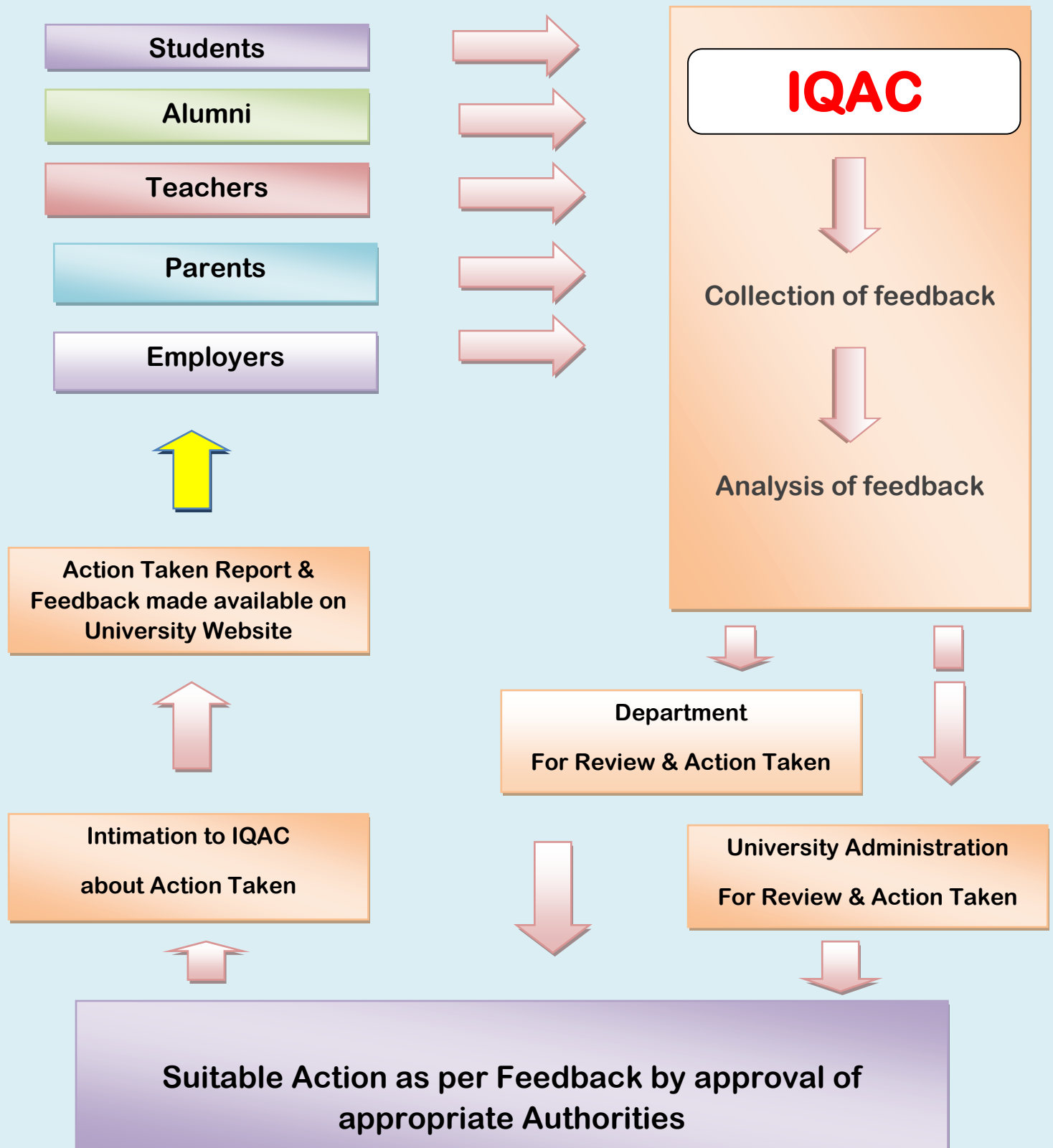


Feedback Analysis of Stake Holders and Action Taken Report



MJP Rohilkhand University
Pilibhit Bypass Road, Bareilly-243006,
Uttar Pradesh, India.

Feedback System of MJPRU



Mahatma Jyotiba Phule Rohilkhand University, Bareilly

महात्मा ज्योतिबा फुले रुहेलखण्ड विश्वविद्यालय, बरेली

A State University-Government of UP; NAAC Accredited; ISO 9001:2015 certified



Feed Back Analysis of Stake Holders

And

Action Taken Report

2021-22



Feedback Analysis and Action Taken Report **(2021-22)**

IQAC of M. J. P. Rohilkhand University is proactive and progressive making it a mandatory tradition for the departments to collect feedback from stake holders- Students, Teachers, Alumni, Employers and Parents. The feedbacks are analyzed by departments and relevant suggestions are listed out and action taken report is submitted to appropriate bodies.

The Department/Institution collects feedback on curriculum aspects and courses from different stake holders such as Students, Teachers, Alumni, Employers and Parents in Google forms. After analyzing the feedback and taking into consideration the valuable and relevant suggestions necessary actions were executed.

Objective: The objective of this whole exercise is to evaluate critically the impact of institution on various stakeholders. The feedbacks obtained are analyzed through statistical tools. Based on the feedback of various stakeholders, further action is taken by appropriate bodies.

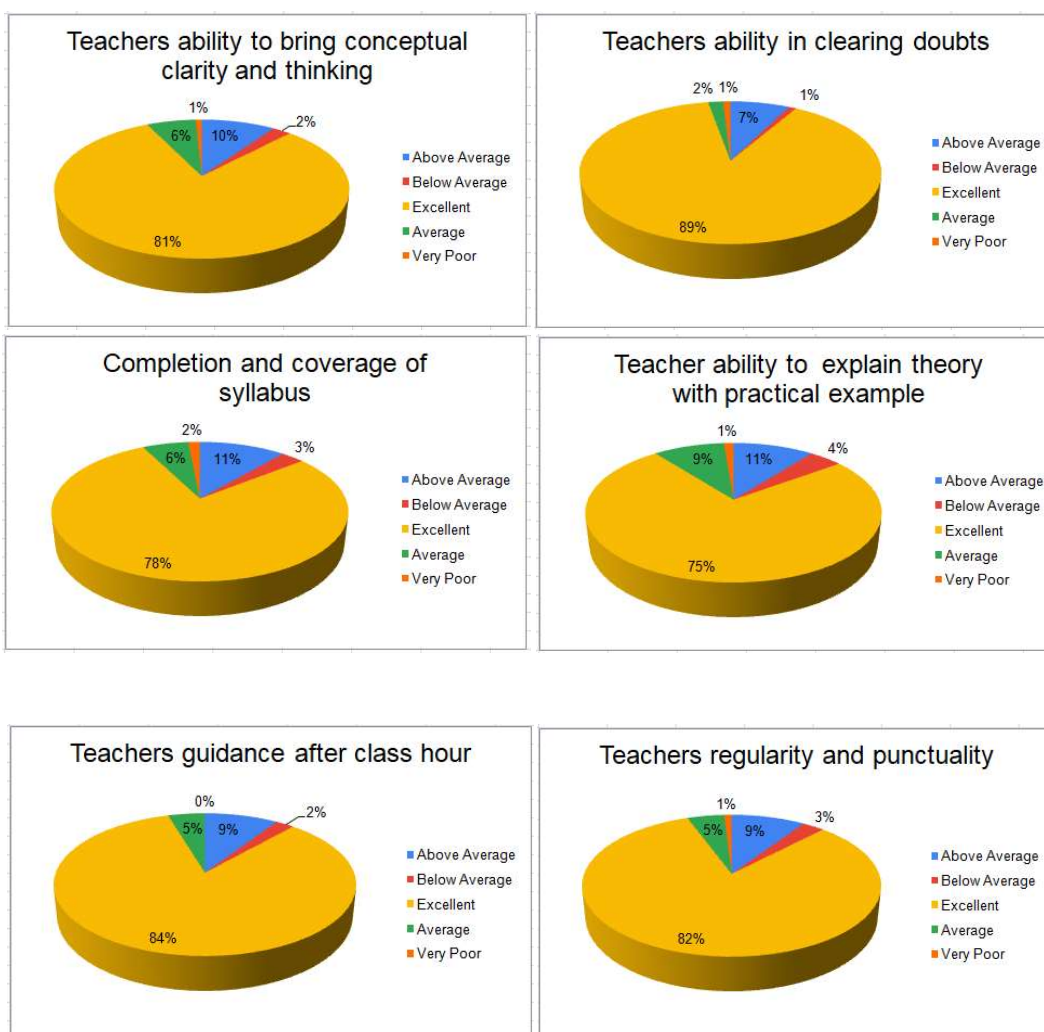
Feedback from Students

(2021-22)

Feedback from the students have been collected in google forms.

Link for sample feedback forms: <https://mjpru.ac.in/NAAC/Criteria1/1.4/FeedbackFormsMJPRU.pdf>

Student Feedback Analysis





Mahatma Jyotiba Phule Rohilkhand University, Bareilly
महात्मा ज्योतिबा फुले रुहेलखण्ड विश्वविद्यालय, बरेली
A State University-Government of UP; NAAC Accredited; ISO 9001:2015 certified

After collecting the feedback from the students, the analysis is made on: The teachers ability to bring conceptual clarity, Clearing doubts, Completion and coverage of syllabus, Explanation of theory with practical examples, Teachers guidance after class hours and Teachers regularity and punctuality.

On all these parameters most of the students graded “Excellent” or “Above Average” as shown above in Pie charts. However, the students made request for following additional privilege as remarks in Google forms:-

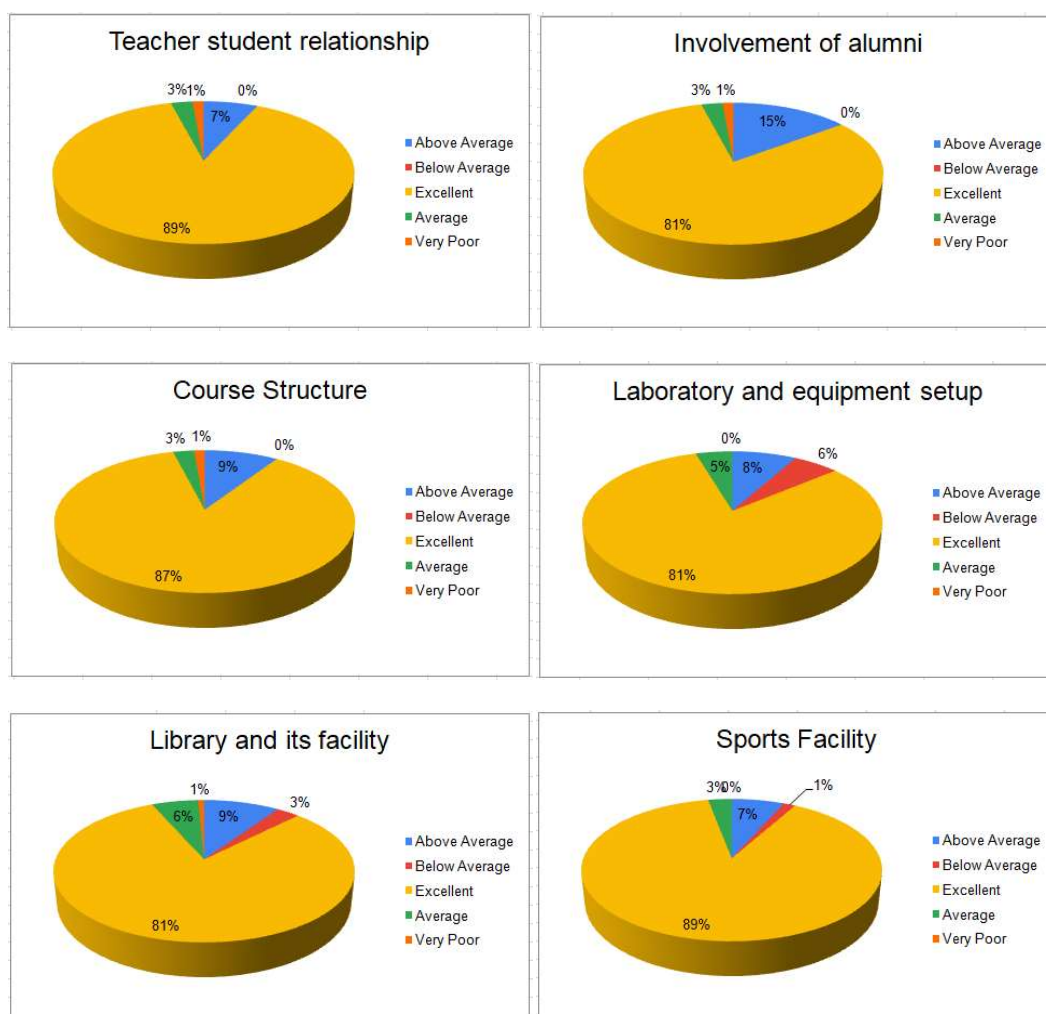
- (1) Courses on foreign languages should be initiated.
- (2) A stipend for Research Scholars who are not receiving financial assistantships from any agency.

Feedback from Alumni (2021-22)

Feedback from the Alumni have been collected in google forms.

Link for sample feedback forms: <https://mjpru.ac.in/NAAC/Criteria1/1.4/FeedbackFormsMJPRU.pdf>

Alumni Feedback Analysis





Mahatma Jyotiba Phule Rohilkhand University, Bareilly
महात्मा ज्योतिबा फुले रुहेलखण्ड विश्वविद्यालय, बरेली
A State University-Government of UP; NAAC Accredited; ISO 9001:2015 certified

After collection of feedback from the alumni and its subsequent analysis on:

- (1) Teacher- student relationship
- (2) Involvement of alumni
- (3) Course structure
- (4) Laboratory and equipment setup
- (5) Library facilities and
- (6) Sports facility

Revealed that, most of the alumni are fully satisfied with all above and graded as “Excellent” as shown in Pie charts mentioned above. However, the alumni have made some recommendations as mentioned below:

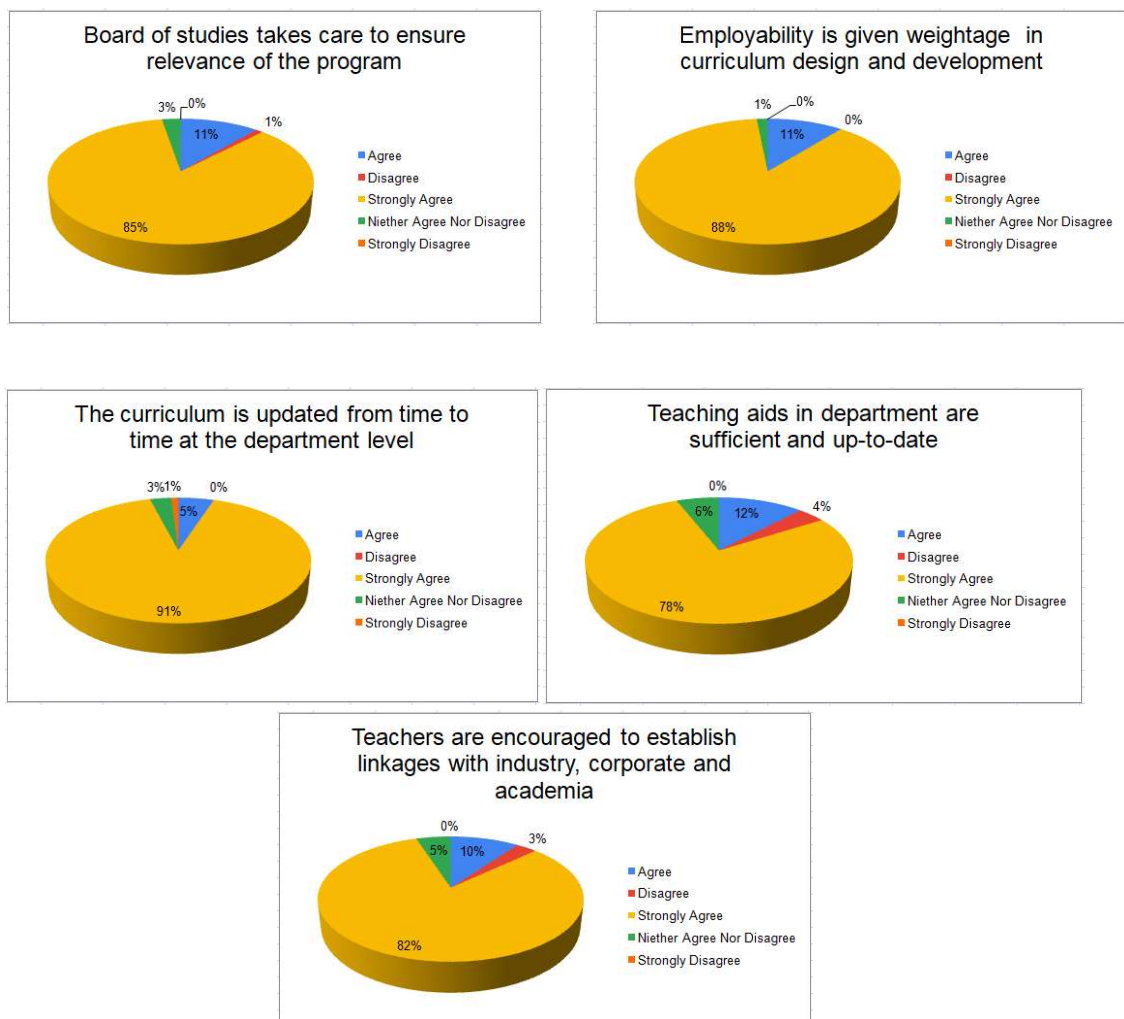
- MoUs with industries and academic institutions be strengthened.
- University should start new PG/Ph.D. programmes in Engineering disciplines.

Feedback from Teachers (2021-22)

Feedback from the teachers have been collected in google forms.

Link for sample feedback forms: <https://mjpru.ac.in/NAAC/Criteria1/1.4/FeedbackFormsMJPRU.pdf>

Teachers Feedback Analysis





Mahatma Jyotiba Phule Rohilkhand University, Bareilly
महात्मा ज्योतिबा फुले रुहेलखण्ड विश्वविद्यालय, बरेली
A State University-Government of UP; NAAC Accredited; ISO 9001:2015 certified

Upon collecting the feedback from the teachers and subsequent analysis on points :

- (1) Board of Studies take care to ensure relevance of the program
- (2) Employability is given weightage in curriculum design and development
- (3) The curriculum is updated from time to time at the department level
- (4) Teaching aids in department are sufficient and up-to-date and
- (5) Teachers are encouraged to establish linkage with industry, corporate and academia

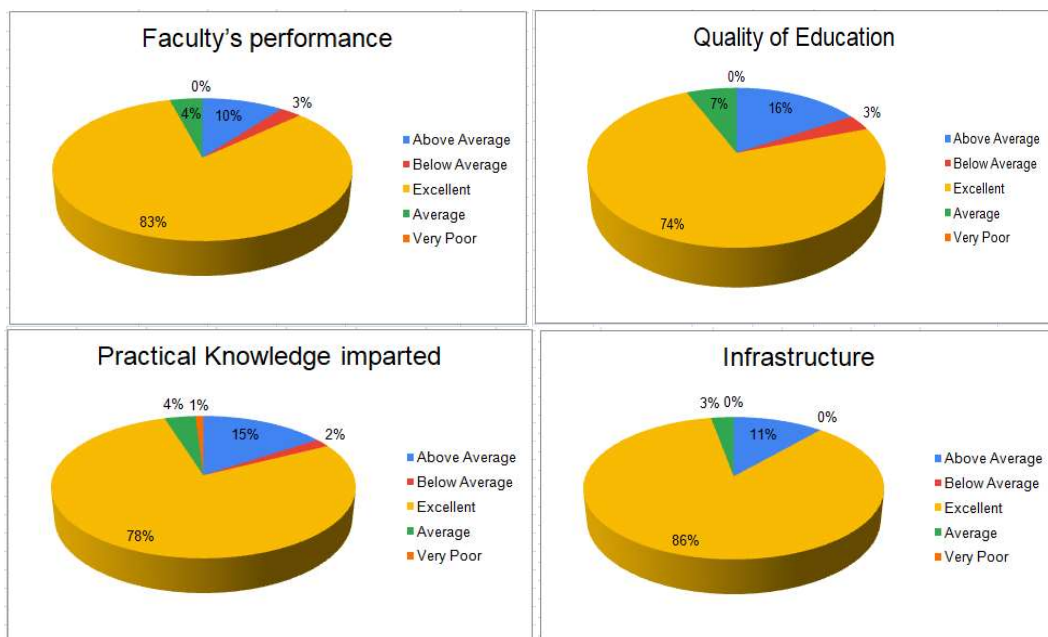
Revealed that majority of teachers are fully satisfied with present curriculum and graded as strongly agree or agree. However, few of the teachers were of the opinion that the coverage amount of group medical insurance should be enhanced for them and their family.

Feedback from Parents (2021-22)

Feedback from the parents have been collected in google forms.

Link for sample feedback forms: <https://mjpru.ac.in/NAAC/Criteria1/1.4/FeedbackFormsMJPRU.pdf>

Parents Feedback Analysis



Feedback from parents were collected and analyzed based on the points: Faculty's performance, Quality of education, Practical knowledge imparted and Infrastructure etc. the response of parents was highly positive and they graded with high rank as shown in Pie charts mentioned above.



Mahatma Jyotiba Phule Rohilkhand University, Bareilly

महात्मा ज्योतिबा फुले रुहेलखण्ड विश्वविद्यालय, बरेली

A State University-Government of UP; NAAC Accredited; ISO 9001:2015 certified

IQAC had forwarded all these points to the concerned departments. The following actions were taken by the concerned department.

Action Taken Report (ATR)

Students Feedback ATR (2021-22)

S. No.	Feedback	Action taken
1	Courses on foreign languages should be initiated.	Various new Diploma/certificate programmes in Foreign languages e.g. Mandarin, French and German etc. have been recommended by BOS. These programmes are likely to start in coming years.
2	A stipend for Research Scholars who are not receiving financial assistantships from any agency.	Scholarship of Rs 12000/- per month is approved for research scholars who are not JRF or not getting any financial assistance from any funding agency.



Mahatma Jyotiba Phule Rohilkhand University, Bareilly
महात्मा ज्योतिबा फुले रुहेलखण्ड विश्वविद्यालय, बरेली
A State University-Government of UP; NAAC Accredited; ISO 9001:2015 certified

Alumni Feedback ATR (2021-22)

S. No.	Feedback	Action taken
1	MoU with industries and academic institutions be strengthened.	The university has already signed MoU with various industries/ academic institutions like B. L. Agro, National Innovation Foundation – India (NIF), John Carroll University (JCU), University Heights, OH USA, Education Division Taipei Economic and Cultural Centre in India and Aryabhata Research Institute of observational Science (ARIE), Nainital etc. for the benefit of students/ faculties and many more are in pipeline.
2	University should start new PG/Ph.D. programmes in engineering disciplines.	Many new PG programmes including Integrated dual degree M.Tech-Ph.D. programmes have been recommended by BoS. These programmes are likely to start in coming years.

Teachers Feedback ATR (2021-22)

S. No.	Feedback	Action taken
1	The coverage amount of group medical insurance should be enhanced for them and their family.	Group medical insurance coverage has been enhanced from Rs. 5 to 10 Lac from the current year.